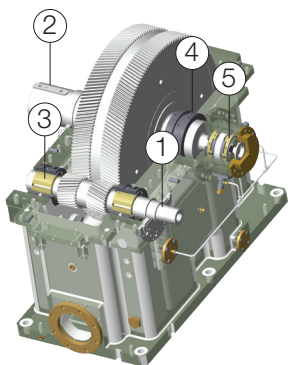
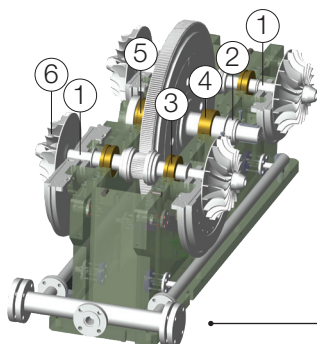


COMPRESSOR / BLOWER GEARS & GEAR BOXES

Type	Type of Impeller Mounting Method	Medium
Standard	Flexible Coupling	Oxygen
	Taper Shaft	Nitrogen
	Stub Shaft Coupling	Carbon dioxide
	Screw coupling	Hydrogen
Integral	Shrink Fitting	Methane
	Hirth Connection	LPG
	Spigot Location with Tie Rod Connection	Air
	Self-Cantering Compression Joint	Natural Gas
	Polygon connection	Helium
		Wet / Dry Gas
		Seal Gas
		Recycled Stripping Gas

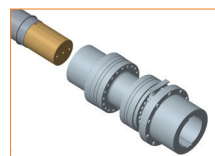


STANDARD GEAR BOX

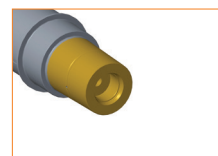


INTEGRAL GEARED COMPRESSOR GEAR BOX

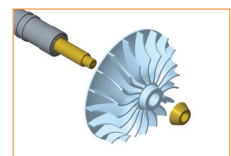
1. High Speed Pinion Shaft
2. Low Speed Gear Wheel with Shaft
3. High Speed Tilting Pad Radial Bearings
4. Low Speed Journal Bearing
5. Tilting Pad Thrust Bearing
6. Impeller



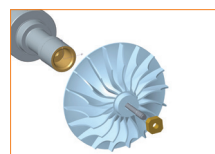
Flexible Coupling



Taper Fit



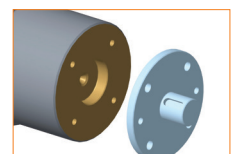
Shrink Fitting



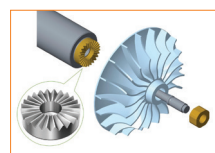
Self Cantering



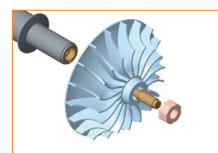
Screw Coupling



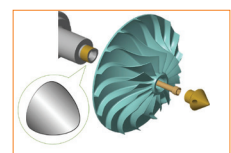
Stub Shaft Coupling



Hirth Connection



Tie Rod Connection



Polygon Connection

REFERENCES OF FEW REPLACEMENTS TO WORLD RENOWNED MAKES

Replacement to SEISA make

Gearbox running at 19,050 and 15,783 RPM

Power: 1,150 kW

Compressor Volumetric flow 14,750 m³ /Hr

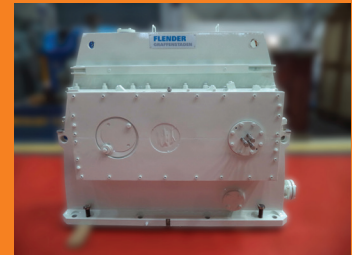


Replacement to FGS make

Gearbox running at 27,685 RPM

Power: 1,400 kW

Compressor Volumetric flow 5,740 m³ /Hr



Replacement to SIEMENS make

Gearbox running at 13,073 RPM

Power: 4,375 kW

Compressor Volumetric flow 53,875 m³ /Hr

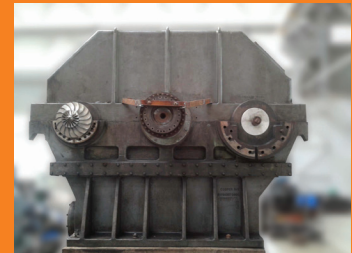


Replacement to COOPER make

Gearbox running at 14619 RPM

Power: 2567 kW

Compressor Volumetric flow 42,345 m³ /Hr



Replacement to BHS Voith make

Gearbox running at 15,581, 18,094 & 20,775 RPM

Power: 5000 kW

Compressor Volumetric flow 27,300 m³/Hr



Replacement to MHI make

Gearbox running at 8,025 & 11,787 RPM

Power: 16,330 kW

Compressor Volumetric flow 117,000 m³ /Hr



Replacement to DEMAG make

Gearbox running at 5982 & 8376 RPM

Power: 5300 kW

Compressor Volumetric flow 65,350 m³ /Hr



Replacement to SIEMENS make

Gearbox running at 9138 and 10751 RPM

Power: 4,650 kW

Compressor Volumetric flow 108,000 m³ /Hr



POWER TRANSMISSION BUSINESS

1,2,3, Belagola Industrial Area, K.R.S. Road, Metagalli Post, Mysore - 570 016 India

Tel: +91 (0) 0821 4286501-506 | Fax: +91 (0) 0821 4286531

Website: www.trivenigroup.com | Email: mktg@ptb.trivenigroup.com