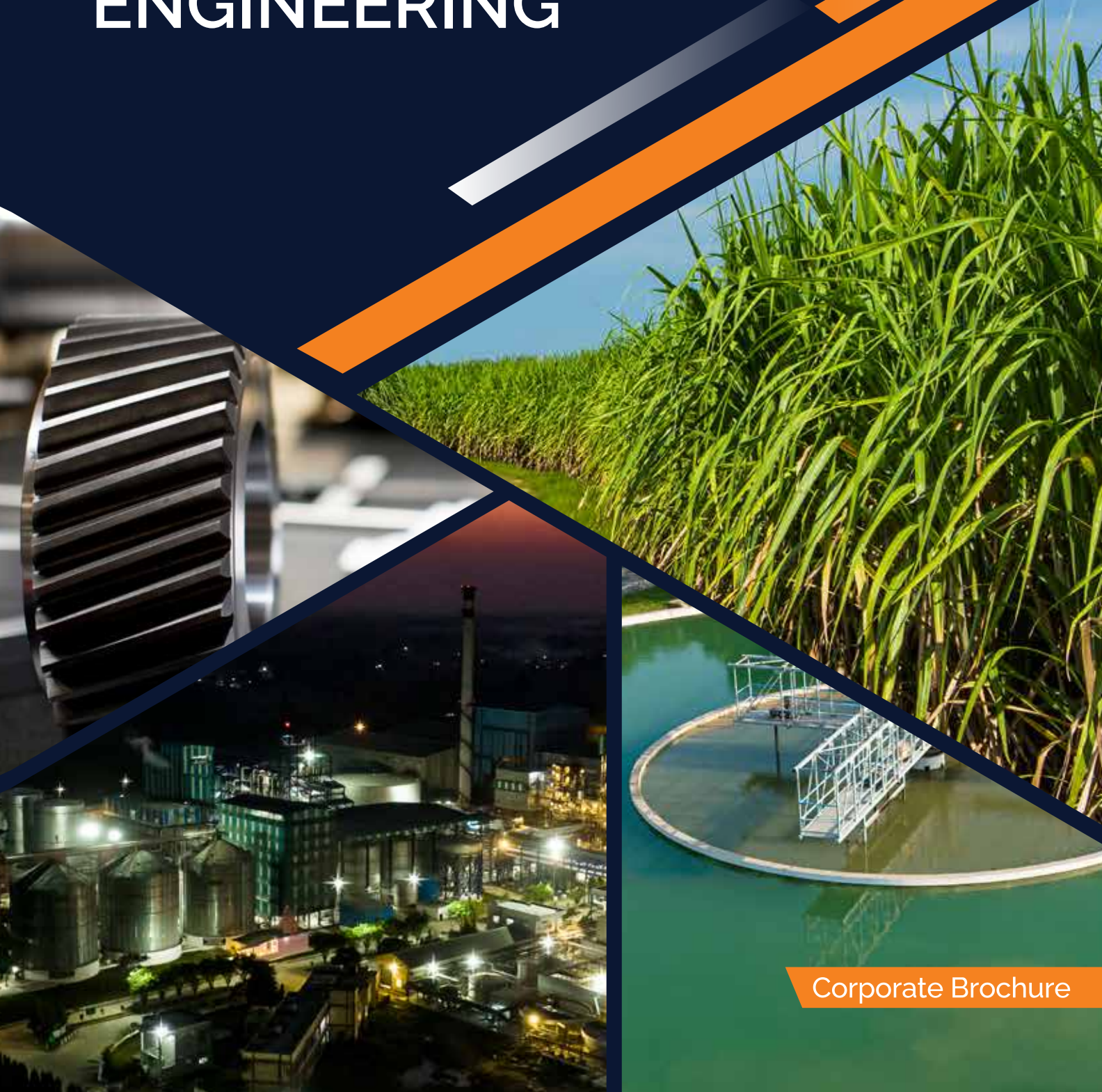


INSPIRED ENGINEERING





CONTENTS

01 Business at a glance

03 Business Overview

05 Sugar Business

07 Triveni Brands- FMCG Division

09 Alcohol Business

11 Power Transmission Business

14 Defence Business

15 Water Business

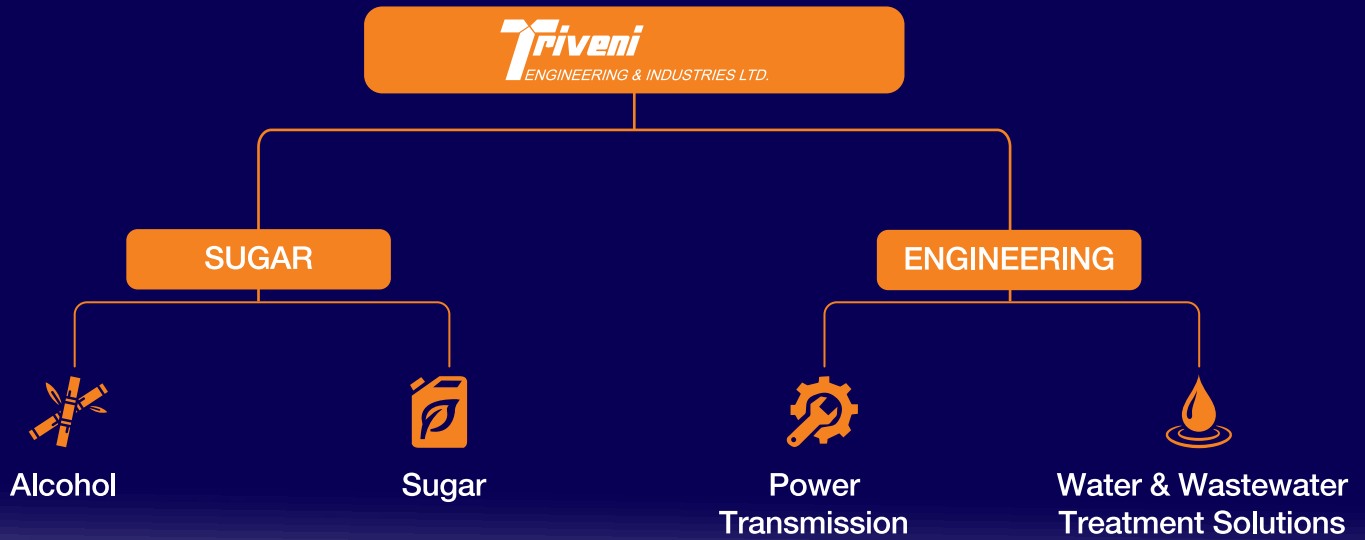
18 Environmental Social Governance

22 Important Contacts



STRONGER AND SUSTAINABLE BUSINESS MODEL

Triveni Engineering & Industries Limited is a diversified and integrated industrial conglomerate with prominent market positions in the businesses of sugar, alcohol, power transmission and water and wastewater treatment.





Amongst India's largest integrated sugar and ethanol manufacturers



Amongst the leading players in Power Transmission and Water & Wastewater treatment solutions



Preferred supplier for Indian Navy & Indian Coast Guard



Preferred partner to Original Equipment Manufacturers (OEMs) for gears/ gearboxes



70,500 TCD Sugarcane crushing capacity



24 World - class manufacturing facilities



960 KLPD Alcohol/ Distillation capacity



12,000+ High-speed gearbox installations globally



1,500+ Water installations across India



12,000+ MLD of water treated



ICRA AA+ (Stable) - Long-term rating upgraded



215 K+ Hecter Area under Sugarcane



BUSINESS OVERVIEW

Our Operating Businesses

Sugar



8 Sugar mills in UP of which 7 are FSSC 22000 certified sugar mills

Best-in-class manufacturing processes with stringent compliance and quality benchmarks

Strong farmer relations and timely sugarcane payment

Extensive sugarcane development programme with farmers

Co-Generation

- 104.5 MW generation capacity from co-product bagasse across six plants, with three using highly efficient 87 ata/515° C steam cycle
- Meeting captive needs, and surplus sold to Uttar Pradesh Power Corporation Limited (UPPCL)

Our Products

- Multi-grade - large, medium and small
- White Crystal Sugar, Refined Sugar (for high-grade end users), Raw Sugar (for export, based on market dynamics), Pharmaceutical-grade Sugar

Our Customers

- Multinational beverage companies, breweries, pharmaceutical companies, confectionery manufacturers, dairy and ice cream producers
- Large institutions for premium high-quality crystal sugar

Alcohol



6 ultra-modern distillation facilities across UP

Integrated operations providing assurance of feedstocks (molasses, syrup) and fuel (bagasse)

Efficient operations with focus on improving recoveries and reducing supplementary fuel

Adherence to Environment, Health, Safety and Sustainability standards

Our Feedstock and Product Mix

- Flexibility of feedstocks - grain/sugarcane based
- Flexibility of products - Fuel-grade Ethanol, Extra Neutral Alcohol and Rectified Spirit, Indian Made Indian Liquor (IMIL) and upcoming Indian Made Foreign Liquor (IMFL)
- High-quality by-products - Distillers Dried Grain Solubles (DDGS), Potash-rich ash and CO₂

Our Customers

- Oil Marketing Companies (OMCs), Fertiliser Companies, Institutional Customers etc.

Power Transmission



3 business segments – Gears, Defence and Built-to-Print

Modern integrated manufacturing facility in Mysuru, Karnataka with world-class equipment, technology, automation and digitalisation

Reputed for timely delivery, reliability and product excellence enabled by value engineering, high-quality and cost-competitive integrated manufacturing and R&D

Expertise in reverse engineering and replacement solutions

Offering 360-degree service solutions, health monitoring services, and spares and aftermarket solutions

Our Products

- Power transmission: High-power and high-speed gears for steam/gas turbines, compressors, pumps, blowers, and other special-purpose industry applications; low-speed gearboxes for diverse industries
- Defence portfolio: Propulsion and other critical gearboxes, critical turbo and motor driven pumps, gas turbine generators for auxiliary power, fin stabilisers, propulsion system integration, propulsion shafting

Industries We Serve

- Power Generation (IPPs), Refinery & Petrochemical, Rubber & Plastics, Oil & Gas, Sugar, Marine, Chemical & Fertiliser, Cement and Steel

Water



Leading solutions provider for efficient water management for industrial/municipal/urban applications

Complete and sustainable water/wastewater treatment solutions across water usage segments and industries

Turnkey solutions offered on EPC/PPP (Engineering Procurement and Construction/ Public Private Partnerships) / HAM (Hybrid Annuity Model) / Build Own Operate Transfer (BOOT) models

Proven track record of executing large projects in India, with over 100 projects executed

Customer Care Division for value-added services for operation management and performance optimisation

Solutions and Services Offered

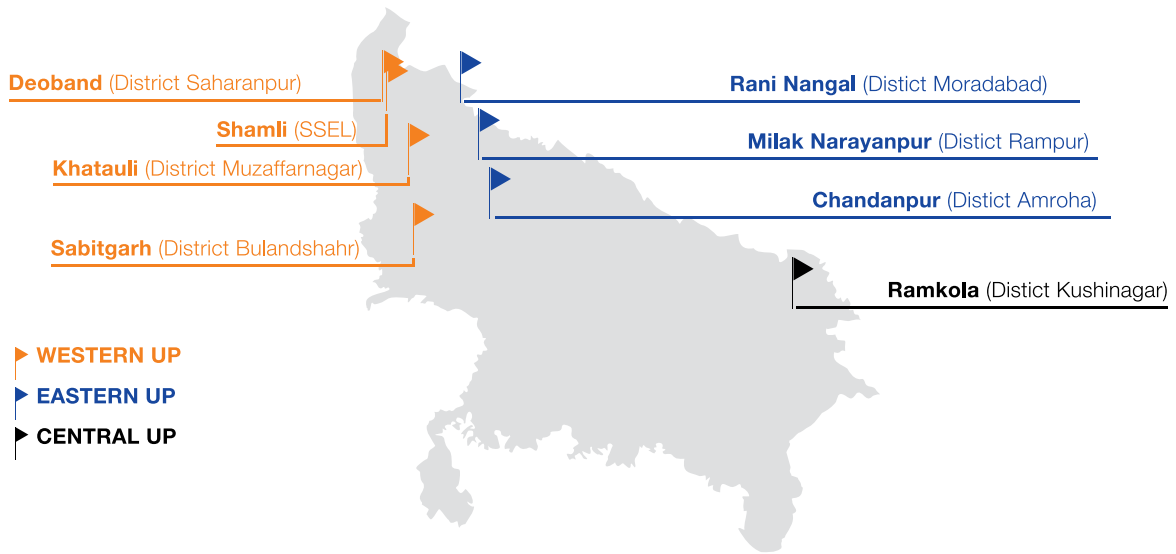
- Solutions: Water treatment, water & wastewater network management, wastewater/sewage treatment (WTP/STP), desalination for seawater & brackish water, recycle and zero liquid discharge (ZLD)
- Service: Operations and maintenance, annual maintenance contracts, product & process audits, health check-ups, upgradation of existing plants, spares and service, on-site support

Industries Served

- Municipal WTP/STP, CETP/ZLD for Industrial clusters, Refineries, Coal, Sand Processing Plant, Non-ferrous Industries, Oil & Gas, Thermal and Hydro Power Plants, Steel Plants, Sugar & Allied Industries, Desalination

SUGAR BUSINESS

Strategic Manufacturing Presence



The Triveni USP

- Strategic Location: Presence in Western and Central UP which has one of the best cane area with high yields and water availability. Strong farmer relations, timely sugarcane payment resulting in high drawl rates and good cane productivity.
- Strong recovery: The Company has one of the best recoveries in the state of Uttar Pradesh.
- Product Mix and Price Benefit: Production capacity of ~70% refined sugar, coupled with the high-grade pharmaceutical quality sugar produced, helps secure higher realisations.
- Prestigious Customer base: Key supplier to major multinational soft drink companies, leading confectionery manufacturers, breweries, pharmaceutical companies, dairies and leading ice cream producers.
- 350K+ farmer relationships

Sugarcane Development Programme

- Structured Varietal Substitution Programme: An aggressive varietal substitution programme is underway for identification, faster multiplication, and commercial use of desired high sugar and disease resistant varieties for the mutual benefit of the Company and the farmers.
- Significant focus on Yield improvement through various agronomic interventions (e.g. wide spacing, trench planting, etc.)
- Active engagement with farmers: Development of very large number of model demonstration (demo) plots with 40-50% higher yields, for neighbouring farmer visits to understand know-how on yield enhancement activities, which can be replicated in own plots with an objective on yield and thereby income enhancements
- Soil Health Improvement: Application of balanced dosage of fertilizers & nutrients as per soil analysis reports and recommendations
Crop Protection from different Pests & Diseases using a structured surveillance programme. Farm implements and mechanization for enhancing inter-cultural operations, etc.
- Various digital initiatives towards sugarcane development programme

DRIVING EXCELLENCE WITH TECHNOLOGY

Empowering Farmers with Technology

Farmer Engagement And Assistance

We operate a dedicated cane development portal and app for farmers, Triveni Cane, which is revolutionising farmer engagement and assistance. The platform provides a wide range of support services empowering farmers to efficiently manage crops and boost agricultural productivity.

Triveni Cane Platform Features

Provides valuable insights and value-added services at farmers' fingertips, including soil testing, fertiliser use and plot-specific suggestions

Enables seamless communication between farmers and our experts, using both text and voice-based messaging in both English and Hindi languages

Leverages GPS technology to facilitate farmers to nearby vendors for seed and other agri-input procurement alongside real-time updates on weather, disease and other notifications

Impact achieved

1.98 lakh

Farmers using the platform regularly

9.25 lakh

Farmers plots mapped

1,05,223

Queries of farmers resolved



TRIVENI BRANDS - FMCG DIVISION



Triveni Brands currently constitutes Shagun Sugar, Triveni Sugar & the Private Label Sugar Business.

Omni-Channel Strategy

Our products will have a strong omni-channel strategy in place and we are committed to growing each business line/brand in a sustainable manner while keeping the customer at the center.

The mission of this business is to create sustainable, innovative and high-quality products that delight customers.

The mission of this business is to create sustainable, innovative and high - quality products that delight customers

Shagun Sugar

Shagun Sugar has been a staple for consumers with its high quality for years. We have further enhanced the product quality with DRPIE Technology to set yet another benchmark and meet the International standards.



No Added Sulphur



Ultra Pure



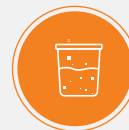
Double Refined



DRPIE Technology



European Union Standards



Quick Dissolve



Environment Friendly



Triveni Brands White Crystal Sugar Contract Manufacturing

We process and pack sugar for leading retail giants and modern trade organisations in India. We use the latest packaging processes that are fully automated which helps ensure the sugar is untouched by hand and adheres to the highest quality parameters. We use Double Refined Process Ion Exchange (DRPIE) Technology at our sugar plant which is India's Largest Backend Sugar Refinery. The sugar produced at our refinery also passes European Union Standards. Our commitment to high quality and innovation is only rivalled by our attention to detail to keep customers happy!

Groups that Trust Us Deeply

- **Reliance**
- **DealShare**
- **Aadhaar**
- **BigBasket**
- **Metro**
- **Adani Wilmar**

Why we are the Best in the Contract Manufacturing

- Availability of all grades of sugar (raw material)
- Online stitching machine with conveyor belts
- History of success
- Customization facility
- Check weigher & metal detectors at all Critical Control Points
- Adaptive & fast
- Most modern printing/labeling techniques - Thermal Transfer Printers (TTP)
- Competitive costing
- India's only BRC (British Retail Consortium) certified state of the art sugar manufacturing facility
- Online secondary bag printing machines
- Dedicated client servicing
- Focus on customer delight & long term relationships
- Attention to complex details by a focused team
- Strict adherence to QC norms above & beyond requirements
- Storage on pallets and usage of electric pallet trucks

Our Certifications

FOOD SAFETY
SYSTEM CERTIFICATION
22000



Some of our USPs



DRPIE
Technology



No Added
Sulphur



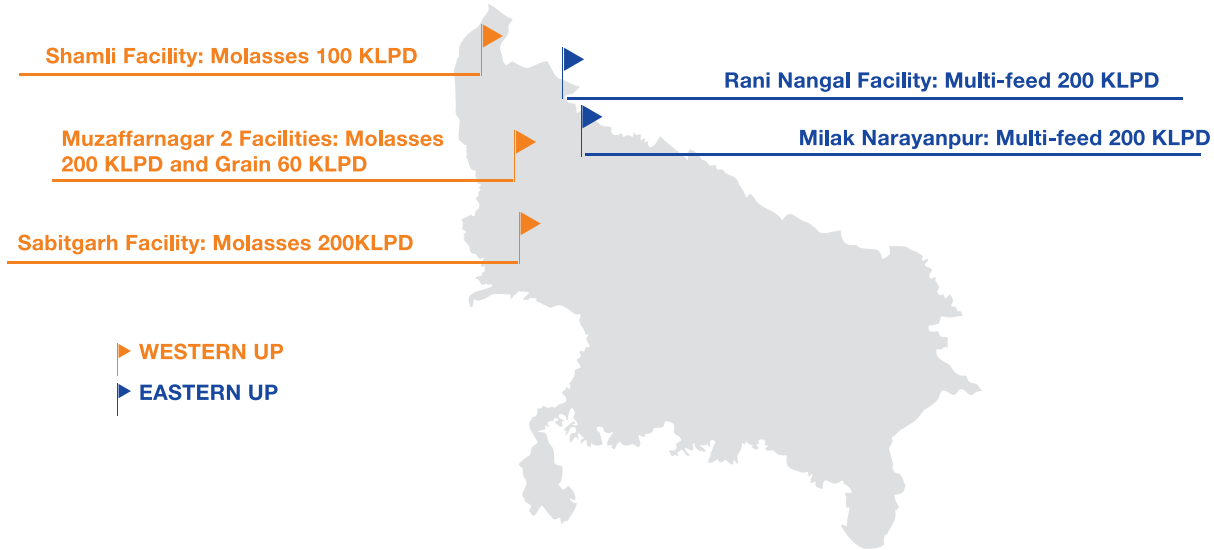
European Union
Standard

As India's leading sugar producer, allow our economies of scale to grow your business!

ALCOHOL BUSINESS

Our Alcohol Business Profile

Flexibility of feedstock and product mix



Our Alcohol Business Strengths

- Integrated operations provides assurance of feedstocks (molasses, syrup) for distillery operations and fuel for manufacturing (bagasse) thus ensuring full capacity utilization to maximize production
- Flexibility of both feedstock (grain/sugarcane based) and product mix (ethanol/ENA/Rectified Spirit, etc.) to optimize production and profitability based on economics
- High operational efficiencies with continuous focus on the same to further improve recoveries and reduce supplementary fuel
- High adherence to Environment, Health, Safety and Sustainability standards
- Modern & Efficient Technology employed to achieve Zero Liquid Discharge (ZLD)
- High-quality by-products contributing substantial income

Our Value Added Proposition: Distillers Dried Grain Solubles (DDGS)

- Facilities at Milak Narayanpur, Rani Nangal & Muzaffarnagar to help us enhance our value proposition through their partial/full operations on grains
- The by-product of grain-based operations, DDGS, is a protein rich product derived from grains after converting starch in fermentation with yeast to produce Ethanol. This is sold to premium institutions and has been well accepted in market.
- It provides a good amount of protein, fibres and other nutrients, and is a food supplement for poultry, cattle feed, livestock, aquatic products, etc.
- With no branded DDGS currently in the market, the potential for boosting our revenues and enabling profitability with high quality DDGS
- Income from DDGS as a by-product provides significant offset of conversion cost

Our Value Added Proposition: Co2

- In the fermentation process of alcohol manufacturing, carbon dioxide is generated as a by-product. This carbon dioxide can be captured, purified, liquified and put into cylinders or converted into dry ice.
- The Company has a carbon dioxide capturing unit at its Sabitgarh distillery on a Build Own Operate (BOO) basis for which we are paid for the raw carbon dioxide to earn additional revenues. Exploring the possibilities of installing 2 more plants in units
- This is an initiative towards Environment, reduction of emission of Green House Gases (GHG). New opportunities on carbon sequestration by capturing CO2 and storing / injecting underground for mineral value are also being explored
- Share across OEMs & Patronised by global OEMs across application spectrum like STG/ GTG/ Compressor/ Pumps/ Blower/ ID-FD Fans
- One of the few companies globally catering to AGMA & API standards and supplying gearboxes to hazardous and sub-zero temperatures

- Centred on Operational Excellence: Integrated plant located in Mysuru, Karnataka with state of the art infrastructure
- Industry leading Product delivery cycle: Ranging from few weeks to 6 months for full gearboxes
- Strong focus on value engineering, low cost manufacturing, R&D for new product and expertise in reverse engineering & replacement solutions
- Providing critical technology and engineered solutions on multiple fronts to Indian Navy and Indian Defence industry

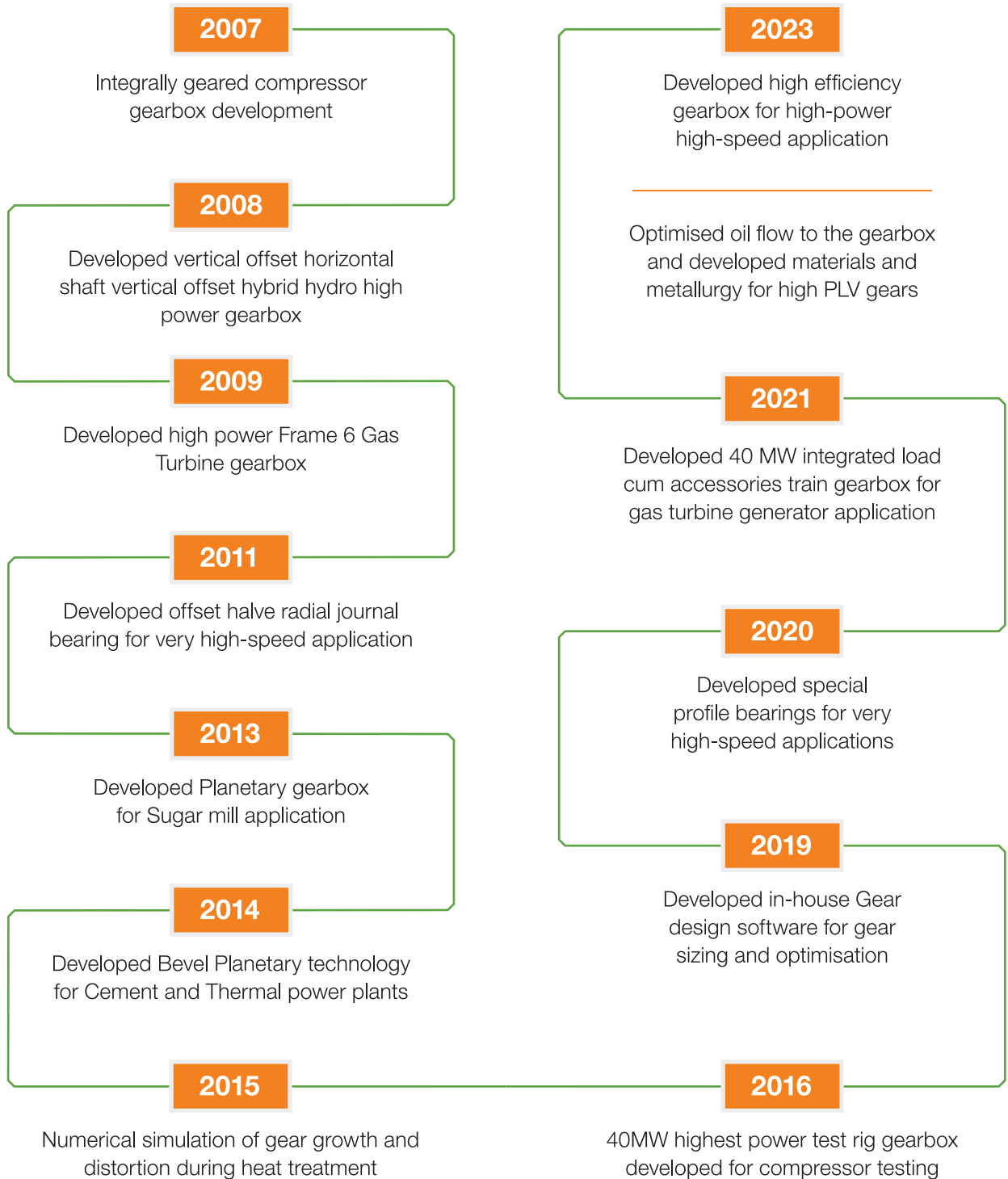
Our Value Added Proposition: Potash-Rich Ash

- The process of conversion of molasses to ethanol generates spent wash (an effluent) which upon concentration is called Slop, further used as fuel in the Incineration boilers which leads to fly ash generation which is rich in potash
- We supply this potash-rich ash for additional revenues, wherein the customer converts the same to produce Potash derived from Molasses (PDM) and sells as potassic fertilizer as per Fertilizer Control Order.



POWER TRANSMISSION BUSINESS

Our Legacy of R&D Excellence



Development of High Efficiency Gearboxes For High-Speed High-Power Applications

We initiated a project in collaboration with a leading Indian university to improve the efficiency of high-power capacity of greater than 30 MW and pitch line velocity of greater than 120 metres per second, by 0.15 percentage points. The technology's results have been validated and brought it on par with global competition.

Development of High-Speed High-power Compressor gearbox

Our international growth strategy necessitated introducing high speed, high power compressor gearboxes technology which can be horizontally deployed across multiple customers in high-potential global markets. Accordingly, we initiated a project in FY 24 for a 27 MW speed increaser compressor application for a European customer and validated it through testing. This technology is deployable for medium to high-power high-speed compressor applications utilising specialised bearings and materials.

Development of PTB's Augment Reality Platform named as Xperia

This product showcases gearbox unique features and its benefits, provides immersive experience of installation and commissioning, reduce turnaround time, enriches troubleshooting knowledge using cause and effect simulations. Xperia App is developed to educate and showcase Steam Turbine, Gas Turbine, Planetary and Integral Gear compressor gearboxes using Android and iOS devices to all existing or potential end customers as well as to PTB employees. This product is aimed to provide 'feel it own it' experience, enhance brand value, improve product patronage along with user analytics.

How TEIL Capitalised on the Market Opportunities

Undertook extensive international customer outreach to demonstrate capabilities and establish relationships

Continued investments in R&D and infrastructure, including expansion of capabilities to manufacture gear with 2.8 metres diameter, up from 2 metres, to capitalise on the global opportunity landscape and enhance market share

Executed key long-term initiative of establishing Centres of Excellence for Gear technology, Finite element analysis, Rotor dynamics, Fluid mechanics, Tribology, Vibration and noise analysis and Structural mechanics

Strengthened manpower to support growing operations and address market demand

We Offer

High-power and high-speed gears, designed for steam turbines, gas turbines, compressors, pumps, blowers, and other special purpose industry applications

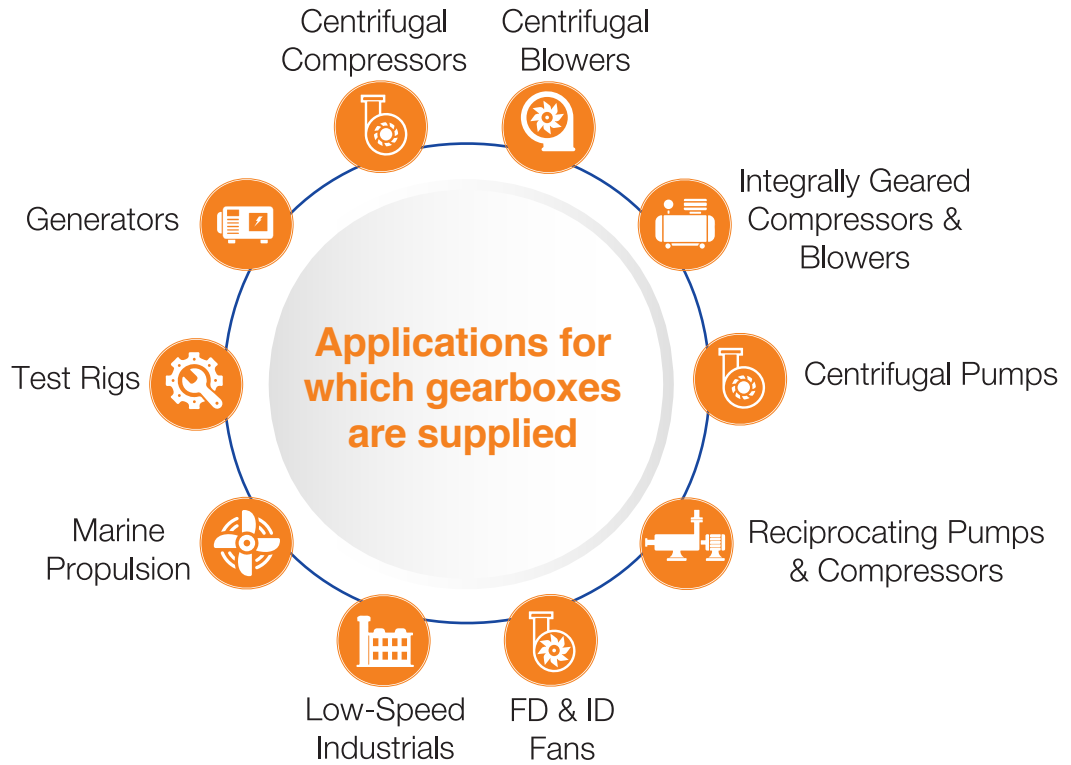
Niche low speed gearboxes for mini hydel turbines, steel mills, sugar mills, rubber mixers and extruders, cement mills, thermal plants, plastics etc.

Marine gearing solutions

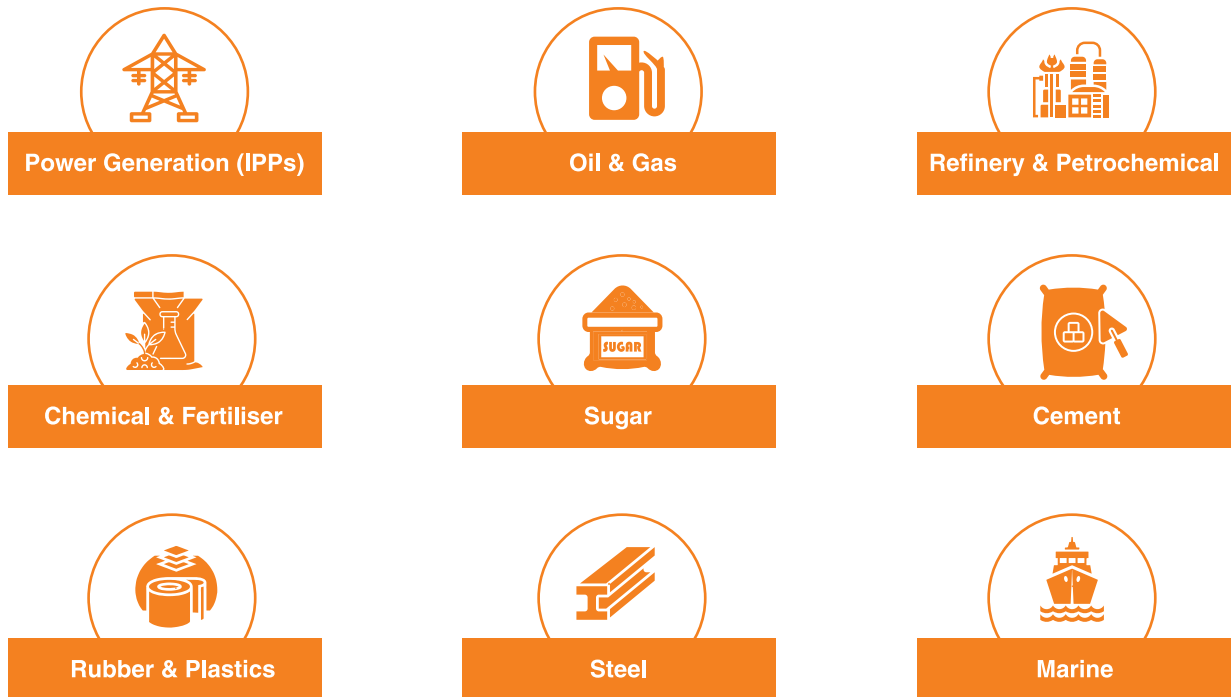
Naval and defence products

Spares and Aftermarket solutions





Serving a Multitude of Industries



DEFENCE BUSINESS

Our Defence business has ventured into a specialised vertical of propulsion shafting post winning an order for Main Propulsion Shafting for sub-surface platform with in-house design & engineering. This would be a pioneering initiative aligned to the Atmanirbhar Bharat policy of Govt of India. The technology developed will enable participation in various other shafting projects for Navy.

Responding to Growth Opportunities

- Outlook for the domestic product segment within high speed gears is extremely promising as industrial Capex in sectors like sugar, distillery, oil & gas, cement, steel is growing and have been supported by policies and robust economic growth.
- Focus on market share gains in product segment, especially from the international market through greater promotion of our technology and focus on new and existing customer relationships.
- In the Defence segment, the business expects increased order booking from key segments of Gas Turbines packaging, gearboxes and special application pumps where the key activities of qualifications and Request For Proposal (RFP) have progressed considerably in the last couple of years
- Increasing footprint to capture high-growth opportunities for Aftermarket segment through a combination of own efforts and expanding the agents' network.
- Setting up of dedicated multi-modal facility for Defence products will also help the business gain confidence of key customers and expand its service offerings

Our R&D investments have helped in significant development of our technology competence in high-speed high-power gearboxes. We shall continue to focus on cost and quality leadership in the international markets.



WATER BUSINESS

Water & Wastewater Treatment Solutions

We are committed to contributing sustainable solutions that lead to environmental protection with an enhanced quality of life.

Key Highlights

- Wide range of innovative water/wastewater treatment solutions across all major water usage segments
- Customised, sustainable solutions/services
- Modes of Operation:
 - a.) End-to-end Turnkey / EPC offerings
 - b.) Private Public Partnership (PPP)
- Efficient total water management across the water cycle
- Track record of executing some of the largest projects in India
- 12,000+ Million Litres Per Day (MLD) Water treated
- 1,500+ installations successfully operating across India
- More than 100 projects in municipal and industrial areas successfully executed

Advanced Solutions



Serving a Wide Variety of Sectors



Municipal WTP/STP



CETP/ZLD for Industrial clusters



Refineries



Steel Plants



Non-ferrous Industries



Oil & Gas



Thermal Power Plants



Intake Water System



Sugar & Allied Industries



Coal



Recycle & Reuse



Desalination



Key Water Solutions Supplies and Commissioned Across Industries Pan India



Intake Systems



Grit Separators



Skimmers



Screens



Clarifiers



Biological Treatment Towers



Sludge Handling Equipment

Identifying Growth Potential

- Government investments in EPC and HAM (Centre & State) projects
- Increasing domestic opportunities in recycle, reuse, zero liquid discharge business
- Emerging opportunities in other river basins (apart from Ganga river)
- Attractive municipal business opportunities in many key states
- Growing urbanisation arising from Water Urban Local Bodies
- Focus of NMCG (National Mission for Clean Ganga) on Ganga tributaries to trigger opportunities in STP
- Schemes like AMRUT, JJM, Smart Cities driving growth
- Exim Bank of India's funding in Asia & Africa

ENVIRONMENTAL SOCIAL GOVERNANCE

Charting a course for Sustainable progress

At TEIL, we are shaping a better, more resilient, and prosperous tomorrow for all through our commitment to sustainable growth. Our focus is on operating responsibly by addressing climate change, circular economy and water challenges, ensuring stakeholders' prosperity and practising good governance. These efforts not only drive our success but also contribute to a brighter future and foster long-term value creation.

ESG-Driven approach at TEIL

- Maintaining ecological balance while ensuring business excellence
- Best-in-class sustainable processes and solutions across all facets of operations
- Enabling community development and social empowerment
- Capital allocation focussed on reducing carbon footprint and promoting energy efficiency
- Promoting circular economy by utilising co-products as raw materials for other products
- Highest level of ethical and corporate governance standards

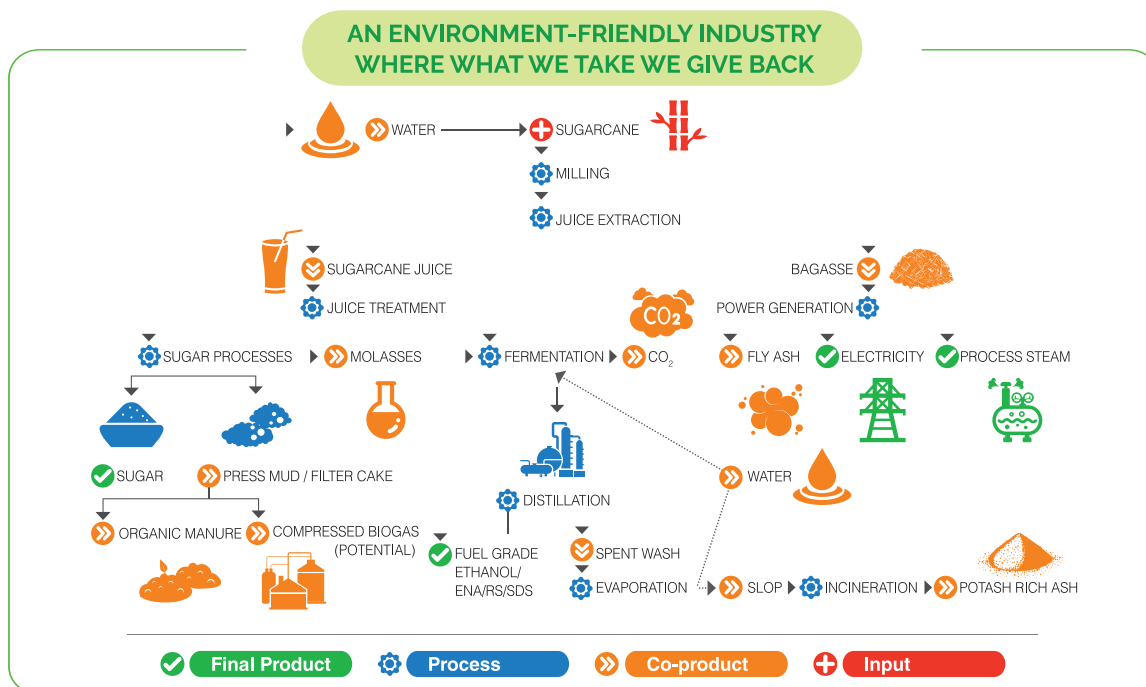
Water and Wastewater Management

We are a leading player in water and wastewater management, providing integrated municipal and industrial solutions to address water challenges globally.

We have installed water treatment plants across our businesses, ensuring zero liquid discharge. The sugar, distillery and power transmission businesses treat process wastewater and reuse it. This minimises groundwater extraction and prevents harm to soil health and biodiversity. The PTB also has rainwater harvesting with a sump capacity of 8 lakh litres, which is 100% used for cooling and gardening purposes.

Circular economy operations

We effectively utilise co-products generated in our sugar and distillery businesses to produce value-added products, minimising environmental impact and maximise value from them.



Some of the Key Efforts Include

- **Co-generation:** Using bagasse, a renewable source of energy, to generate power which is captively used and surplus sold to the grid.
- **Alcohol:** Using all generated molasses (after levy obligation) to produce alcohol – ethanol to blend with petrol and ENA for potable and industrial purposes.
- **Potash rich ash:** A co-product from the incineration of slop, which is a concentrated form of spent wash generated during the conversion of molasses/syrup to ethanol. This is sold for potash fertiliser production, contributing to India's potash self-sufficiency.
- **Carbon dioxide (CO2):** A CO2 plant at Sabitgarh captures the entire CO2 from the fermentation section which is compressed and sold as liquid CO2 and dry ice, avoiding greenhouse gas emissions.
- **Fly ash:** Fly ash derived from bagasse during the steam and power generation process is sold for fly ash brick manufacturing/soil enrichment.
- **Press mud/filter cake:** A residue of cane processing rich in convertible substrates, it is used as organic manure by farmers to enrich soil nutrients. We aim to convert this into renewable biogas through an anaerobic digestion process in future.

Promoting Sustainable Agriculture Practices

We have implemented several best practices to make sugarcane farming more sustainable, including:

- **Improving soil health** through optimal nutrient management, guided by soil analysis based on soil health cards, and encouraging leaving sugarcane on soil to enhance organic content in soil
- **Enhancing irrigation efficiency** for optimising water and fertiliser consumption, thereby reducing costs and improving soil health
- **Integrated pest management** using methods which are economic and environment-friendly
- **Promoting intercropping** with legumes, mustard, wheat, etc. to optimise natural resources, stabilise crop yield and enhance productivity while enhancing farmer income

Sustainable Sourcing

- Our robust sourcing strategy enables the effective selection of vendors based on sustainable requirements. This ensures alignment of their performance with TEIL and contributes to our supply chain resilience.

How our businesses are promoting sustainable sourcing



Sugar

- Established efficient logistics arrangements, including the use of GPS and geofencing to track movements. These ensure efficient movement of raw materials and products, contributing to reduced transport-related emissions, associated costs and timely deliveries which maintains sugarcane quality
- Seamless and resource-efficient supply of bagasse from own sugar units to cogeneration plants



Alcohol

- Sourcing of feedstock (molasses, sugarcane juice/syrup and grain) from own sugar mills and market, alongside transport arrangement monitoring ensures uninterrupted operations



Power Transmission Business

- Most supplies are engineered-to-order and 'largely outsourced' to approved vendors, and inspected in line with our Quality Assurance program and directly deliver at the project sites
- Structured mechanism to develop vendors and maintain approved vendors list for various requirements to ensure efficiency



Water

- Vendor selection based on past performance, cost competitiveness and compliance with regulations and various ESG matters

Minimising the Effluents in Sugar & Alcohol businesses

- Treating and recycling water for use in sugar & distillery processes to minimise the groundwater extraction
- Using effective systems and equipment to reduce effluents, also installed & operating incineration boilers along with complete related systems to ensure Zero Liquid Discharge (ZLD) in all distilleries and generating Value Added Products (VAP) like potash rich ash.
- Limiting air pollution well below regulatory norms through installation of well-engineered Bag Filters/ Electrostatic precipitators (ESPs)/Wet Scrubbers in its boilers.

Power Transmission business: Reducing Carbon footprint

- Invested in a Group Captive Wind Project to facilitate to meet 85% of total power consumption from wind energy currently.
- Gearbox oil and lubricants used in the plant for manufacturing and testing of gearboxes are collected, stored and sold to the State Pollution Control Board-approved vendor for recycling.

Water business: Contributing to Environment and Social Welfare

- Majority of our new STPs are compliant to new NGT surface discharge standards like BOD (<10 ppm), COD (<50 ppm), and TSS (<10) thereby protecting the environment from possible pollution and creating a healthy environment for public at large.
- Our recycle & reuse projects are minimising the pollution load and reducing dependence on fresh water usage.

Fostering Social, Employee and Community Empowerment

Socio-Economic Development of Farmers

We maintain continuous communication with farmers to address their needs. We support them with counselling/education, sugarcane development programmes and soil health improvement to enhance productivity and yields. Digital technologies are used to empower them. Utilising GPS technology, we provide real-time information on weather, disease or any other matters. Satellite mapping and drone-based chemical spraying technologies are employed for disease management. Through these measures, we have strengthened relations with farmers and helped enhance productivity and income.

Empowering Employees

We promote a work culture that fosters diversity, equity, and inclusion, ensuring all employees feel respected and valued. We maintain ongoing engagement through diverse channels and platforms, ensuring their needs are met and promoting a supportive workplace. All our plants maintain stringent health and safety standards resulting in a track record of zero incidents and have policies for human rights ensuring compliance with labour principles. These efforts have resulted in a highly engaged and satisfied workforce contributing to the organisation's growth.

Delighting Industrial Customers

We deliver innovative and exceptional products to our customers in power transmission and water businesses, addressing the evolving needs and empowering their businesses. We have further deployed robust data protection and privacy policies to secure critical information.

Holistic Development and Prosperity of Communities

Education and Women Empowerment

- **Support to schools at Khatauli, Deoband and Ramkola**

The Company supports schools at Khatauli, Deoband and Ramkola which provide free/ subsidised education to children from the local communities. The Company also provided computers to the schools in order to upgrade the education standards at these schools.

- **Support to Nursing School**

As part of the CSR projects relating to promotion of education and women empowerment, the Company provided financial support to the Nursing School of a hospital to improve teaching standards.

Healthcare

- **Screening of Cancer, Osteoporosis and Anaemia in Females**

The Company organised a programme to promote healthcare in women, especially of the lower socio-economic strata in Delhi. Under this project, the hospital provided free investigations and medical advice/consultation to the women from lower income groups of Delhi hospital to improve teaching standards.

- **Preventive Health Check-up Programme for Young Girls**

It also supported a project under which Screening of Developmental & Behavioural Problems in children was undertaken and consultants provided advice for preventing these problems and promoting healthcare in children, especially of the lower socio-economic strata in Delhi. advice/consultation to the women from lower income groups of Delhi

- **New-born Screening Programme**

The Company organised a programme for core screening of new-borns especially who belong to the lower socio-economic strata. The core screening included Congenital Hypothyroidism (CH), Congenital Adrenal Hyperplasia (CAH), Glucose 6-Phosphate Dehydrogenase Deficiency (G6PD) and Oto Acoustic Emission (OAE) for hearing loss

Highest standards of governance

TEIL is a professionally-run organisation with an experienced management team and visionary leaders. Our robust governance framework ensures accountability, transparency and fairness in business practices. We have a robust Code of Conduct which is stringently followed by all employees as well as systems, processes and policies which ensure the highest governance standards and ethical practices.

Our Board is underpinned by diversity with members having broad-based functional and managerial competencies and experience. ~67% of our Board is independent ensuring all decisions and actions are in the interest of the organisation and its stakeholders. We also have in place a robust Enterprise Risk Management (ERM) policy, ensuring effective management of uncertainties and our long-term success.

- **Healthcare Mobile Vans (Mobile Chikitsa)**

The Company through Triveni Foundation is running four mobile healthcare vans (Mobile Chikitsa) in the nearby villages of sugar units in the state of Uttar Pradesh to facilitate community-based healthcare projects in association with Jubilant Bhartia Foundation (JBF) targeting around three lakh farmers.

Promoting Sports

- **Promoting Football for Children & Youth**

The Company supported India Youth Soccer Association, an NGO promoting football among the economically backward section of the society. IYSA implemented Josh Rural project under which they supported boys, girls and coaches in villages and small-town Football Academies in North India with kit, footballs & training equipment

Environment Sustainability

- **Soil Health Analysis and Fertiliser Incentive Program**

The Company implemented soil health analysis and fertiliser incentive programme among the farmers community in order to support the environment sustainability and maintain ecological balance of the soil.

- **Developing, applying innovative methods, tools, and techniques to enable improved water management**

Under this project, Triveni Foundation provided funding support to CII Triveni Water Institute for this project which is focussed on raising awareness, of diverse stakeholders on usage of innovative methods, state-of-the-art tools and world-class techniques that meet international standards and enable appropriate decision-making for water resource planning in India

Important Contacts

REGISTERED OFFICE

Plot No. 44, Block-A,
Phase II Extension,
Hosiery Complex,
Noida-201 305,
District Gautam Budh
Nagar, U.P.
STD Code: 0120
Phone: 4748000
CIN- L15421UP1932PLC022174

CORPORATE OFFICE

'Express Corporate Park',
8th Floor 15-16, Sector-16A
Noida 201 301(U.P.)
STD Code: 0120
Phone: 4308000

KHATAULI SUGAR UNIT

Khatauli, District-Muzaffarnagar,
Uttar Pradesh-251 201
STD Code: 01396
Phone: 8859108061/ 63

DEOBAND SUGAR UNIT

Deoband, District-Saharanpur
Uttar Pradesh-247 554
STD Code: 01336
Phone: 9759607000
9759608000,

RAMKOLA SUGAR UNIT

Ramkola, District-Kushinagar
Uttar Pradesh-274 305
STD Code: 05567
Phone: 9936300473,
9695507700

SABITGARH SUGAR UNIT

P.O. Karora, Tehsil Khurja
District-Bulandshahar,
Uttar Pradesh-203 129
STD Code: 05733
Phone: 9557794246

RANI NANGAL SUGAR UNIT

Rani Nangal, Tehsil
Thakurdwara
District-Moradabad
Uttar Pradesh-244 401
STD Code: 0591
Phone: 9690098098

MILAK NARAYANPUR SUGAR UNIT

Milak Narayanpur, P.O.
Dadiyal District-Rampur
Uttar Pradesh- 244 925
STD Code: 0595
Phone: 9758400160

CHANDANPUR SUGAR UNIT

P.O. Chapna, Tehsil-Hasanpur,
District-Amroha
Uttar Pradesh-244 255
STD Code: 05924
Phone: 267004/05, 7830220828

CO-GENERATION KHATAULI

Khatauli, District Muzaffarnagar,
Uttar Pradesh-251 201
STD Code: 01396
Phone: 9897133335, 9897544464

CO-GENERATION DEOBAND

Deoband, District-Saharanpur
Uttar Pradesh-247 554
STD Code: 01336
Phone: 9759607000,
9759608000

ALCO-CHEMICAL UNIT - MUZAFFARNAGAR

Village Bhikki Bilaspur,
Jolly Road,
District - Muzaffarnagar,
Uttar Pradesh-251 001
STD Code: 0131
Phone: 7895900631

DISTILLERY UNIT - SABITGARH

P.O. Karora, Tehsil Khurja
District-Bulandshahar,
Uttar Pradesh-203 129
STD Code: 05733
Phone: 9557794246

DISTILLERY UNIT - MILAK NARAYANPUR

Milak Narayanpur, P.O. Dadiyal
District-Rampur
Uttar Pradesh-244 925
STD Code: 0595
Phone: 7217030130

DISTILLERY UNIT - RANI NANGAL

Rani Nangal, Tehsil
Thakurdwara District-
Moradabad
Uttar Pradesh-244 401

BRANDED DIVISION

World Trade Tower,
4th Floor, Sector 16,
Noida-201301
Uttar Pradesh

POWER TRANSMISSION BUSINESS

1,2,3 Belagola Industrial Area,
Metagalli Post, K.R.S. Road,
Mysore-570 016
STD Code: 0821
Phone: 4286500, 4286501

WATER BUSINESS

Plot No. 44, Block-A,
Phase II Extension,
Hosiery Complex,
Noida-201 305,
District Gautam Budh
Nagar, U.P.
STD Code: 0120
Phone: 4748000

SIR SHADILAL ENTERPRISES LIMITED

Upper Doab Sugar Mills,
Shamli – 247 776 (U.P.)
Phone: 0120 4308000

CUSTOMER CARE NUMBER

Brands: 1800 203 2033
IMFL: 1800 202 2033







CIN-L15421UP1932PLC022174

8th Floor, Express Trade Towers, Plot No. 15 & 16, Sector 16-A, Noida - 201301, Uttar Pradesh

www.trivenigroup.com

TEIL-CB-11/24